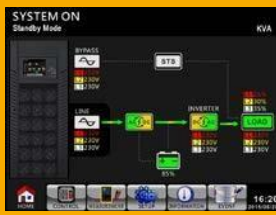


Titan II 3P/3P

ONLINE UPS



10K(L)/15K(L)/20K(L)/30K(L)/40K(L)/60KL/80KL LCD Panel



100KL/120KL/160KL/200KL 10" LCD Panel

- DSP technology guarantees high reliability**
 A Digital Signal Processor (DSP) technology digitizes the data and mathematically manipulates them to provide an improved solution with higher performance.
- Output power factor 1 (Only for 10K-80K)**
 For critical applications, this 3-phase online UPS with output power factor 1.0 ensures higher efficiency and advanced performance.
 *Power Factor 0.9 only for 100K-200K models
- Active power factor correction in all phases**
 Power factor correction is active in all phases and it can improve the efficiency of input.
- Dual Inputs**
 Titan II 33 series is also available for optional dual inputs to support various inputs to have flexibility for system configuration.
- 50Hz/60Hz frequency converter mode**
 Lock output frequency at 50Hz or 60Hz to suit power sensitive equipments.
- ECO mode operation for energy saving**
 ECO mode improves the efficiency up to 98% to cut energy usage & cost. In this mode, loads are supplied by the mains directly. While mains failure, the UPS will constantly supply the power to the connected device without any interruption.
- Emergency power off function (EPO)**
 In case of any emergency and fire, the EPO control mechanism can instantly shut down the system.
- Adjustable charging current**
 Users can adjust charging current via LCD setting based on applications.

- Very powerful charger**
 Titan II 33 series is built-in 12A charger for 10K-40KVA models and 24A for 60K/80KVA models. It's to support very long runtime applications when connecting to big capacity of external battery cabinet.

- Optional parallel operation with common battery**
 The system can be operated in parallel, increasing the capacity and performance. Besides, this parallel UPS system can share common battery packs which might greatly reduce the expense and reach the same performance.

Model	Titan II 33 10K-80K	Titan II 33 100K-200K
Max. parallel units	3	2

- High overload capability**
 Supporting 110% overload capacity for 60 min and up to 1 min overload condition at 150% load.
- Adjustable battery design**
 The number of connected batteries can be adjusted flexibly based on different power demands. This feature can allow UPS to keep running even when some battery packs are damaged.
- Optional 4.3" touch LCD for Galleon II 33 10K-80K models**



Titan II 3-phase in/3-phase out Online UPS Selection Guide

MODEL	10K (L)*	15K(L)	20K (L)*	30K (L)*	40K (L)	60KL	80KL	100KL	120KL	160KL	200KL	
PHASE	3-phase in / 3-phase out											
CAPACITY	10KVA / 10KW	15KVA / 15KW	20KVA / 20KW	30KVA / 30KW	40KV/ 40KW	60KVA / 60KW	80KVA / 80KW	100KVA / 90KW	120KVA/ 108KW	160KVA/ 144KW	200KVA/ 180KW	
PARALLEL CAPABILITY	up to 3 units in parallel						up to 2 units in parallel					
INPUT												
Nominal Voltage	3 x 400 VAC (3Ph+N)											
Voltage Range	190-520 VAC (3-phase) @ 50% load 305-478 VAC (3-phase) @ 100% load						208-478 VAC (3-phase) @ 70% load 305-478 VAC (3-phase) @ 100% load					
Frequency Range	46-54 Hz or 56-64Hz						40-70Hz					
Power Factor	≥ 0.99 @ 100% Load											
OUTPUT												
Output Voltage	3 x 360*/380/400/415 VAC (3Ph+N)						3 x 380/400/415 VAC (3Ph+N)					
AC Voltage Regulation (Batt. Mode)	± 1%											
Frequency Range (Synchronized Range)	46-54Hz or 56-64Hz											
Frequency Range (Batt. Mode)	50 Hz ± 0.1 Hz or 60 Hz ± 0.1 Hz											
Current Crest Ratio	3:1 (max.)											
Harmonic Distortion	≤ 2 % THD (Linear Load) ; ≤ 5 % THD (Non-linear Load)						≤ 2 % THD (Linear Load) ; ≤ 4 % THD (Non-linear Load)					
Transfer Time	AC Mode to Batt. Mode	Zero										
	Inverter to Bypass	Zero										
Waveform (Batt. Mode)	Pure Sine wave											
Overload	AC Mode	100-110% for 60 min, 110-125% for 10 min, >150% immediately						105-110% for 1 hr, 111-125% for 10 min, 126-150% for 1 min, >150% for 200ms				
	Battery Mode	100-110% for 60 min, 110-125% for 10 min, >150% immediately						105-110% for 1 hr, 111-125% for 10 min, 126-150% for 1 min, >150% for 200ms				
EFFICIENCY												
AC Mode	95.5%						94.0%					
ECO Mode	98.5%						98.0%					
Battery Mode	94.5%						93.0%					
BATTERY												
Standard Model	Battery Type	12 V/9 Ah	12 V/9 A	12 V/9 A	12 V/7 A	12 V/9 Ah	N/A					
	Numbers	(10+10) pcs	(16+16) pcs	(16+16) pcs	(16+16) pcs x 2 strings							
	Typical Recharge Time	9 hours recover to 90% capacity										
	Charging Current (max.)	1A ~ 12A (Adjustable)										
	Charging Voltage	+/-136.5 VDC ± 10%	+/-218 VDC ± 10%									
Long-run Model	Battery Type	Depending on the applications										
	Numbers	20 pcs	32-40 pcs (Adjustable)				24A	32A	40A	48A		
	Charging Current (max.)	1A ~ 12A (Adjustable)				2A ~ 24 A (Adjustable)		24A	32A	40A	48A	
	Charging Voltage	+/-136.5 VDC ± 10%	+/-13.65V x N (N=16-20)				+/- 13.7V x N (N = 16-20)					
INDICATORS												
LCD Display	UPS status, Load level, Battery level, Input/Output voltage, Discharge timer, and Fault conditions								10" Touch Type color LCD			
PHYSICAL												
Standard Model	Dimension,DxWxH (mm)	626 x 250 x 750			815 x 300 x 1000		N/A					
	Net Weight (kgs)	124	139	225	250							
Long-run Model	Dimension,DxWxH (mm)	626 x 250 x 750			815 x 300 x 1000		790 x 360 x 1010		940 x 567 x 1015		1040 x 567 x 1452	
	Net Weight (kgs)	28	43	60	61	108	113	194	229	306	340	
ENVIRONMENT												
Operation Temperature	0-40°C											
Operation Humidity	< 95% and non-condensing											
Noise Level	Less than 55dB @ 1 Meter	Less than 58dB @ 1 Meter	Less than 65dB @ 1 Meter	Less than 70dB @ 1 Meter	Less than 75dB @ 1 Meter	Less than 70dB @ 1 Meter	Less than 73dB @ 1 Meter					
MANAGEMENT												
Smart RS-232 / USB	Supports W indows® 2000/2003/XP/Vista/2008, W indows® 7/8/10, Linux and MAC											
Optional SNMP	Power management from SNMP manager and web browser											

*If output voltage is set as 3 x 360VAC, the output power of the unit will be de-rated to 90%. Product specifications are subject to change without further notice.

ONLINE UPS